



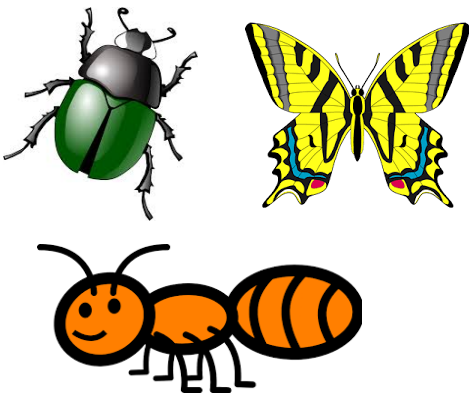
jungle

big, bushy mess of plants all tangled together



safari

a journey to observe animals



insect

a small animal that has a body with 3 main parts, 6 legs, and may have wings



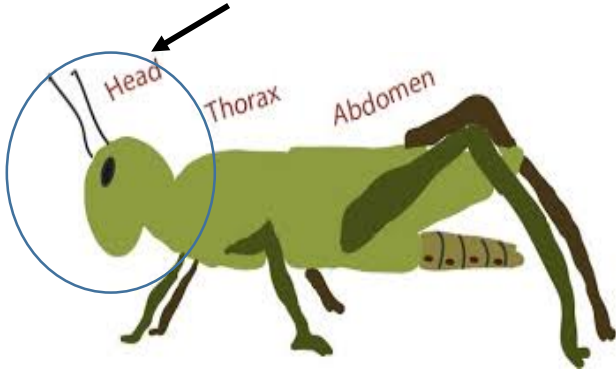
antenna

a thin, sensitive organ on the head of an insect used to feel and touch things



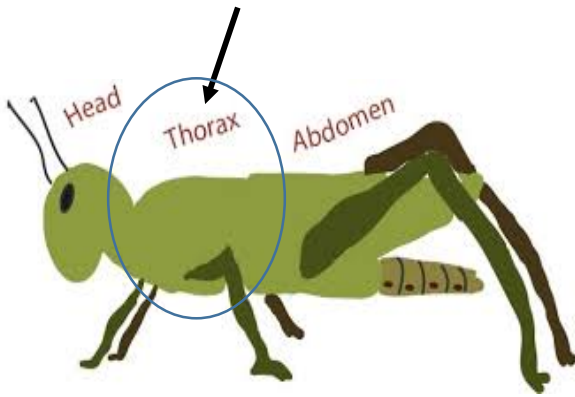
human being

a person



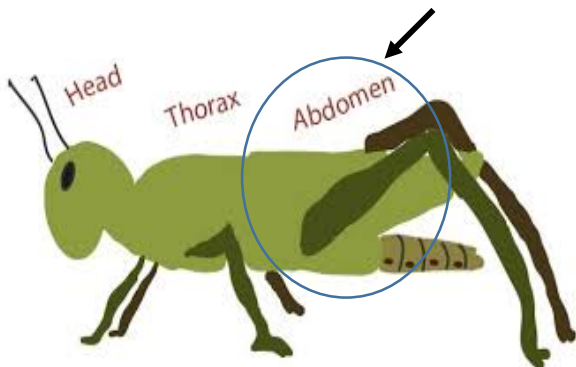
head

the part of an insect body that contains the eyes and mouth



thorax

the middle section of an insect's body; The 6 legs are attached to the thorax.



abdomen

the rear part of an insect's body that holds its heart



observe

to watch and sometimes
listen to something carefully
