



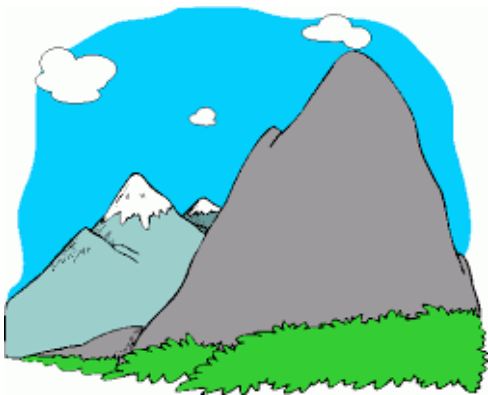
island

any land area surrounded entirely by water



lake

a body of water surrounded on all sides by land



mountain

a landform that rises high above the surrounding land



ocean

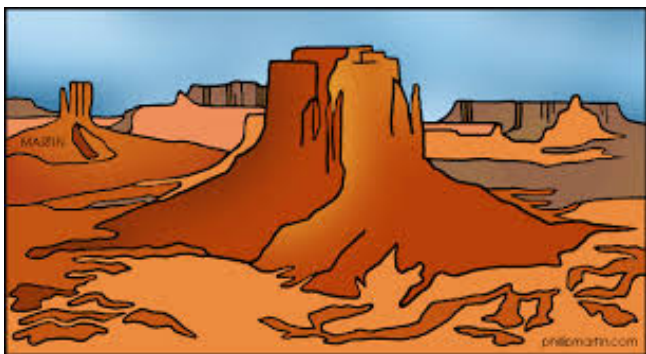
a huge body of salt water



peninsula
a body of land surrounded by
water on three sides



plain
large areas of land that are
mostly flat



plateau
a raised area of land that is
flat on top



river
a natural stream of water
larger than a brook or creek



valley

a long depression, or ditch, in Earth's surface; usually lies between ranges of hills or mountains



canyon

a deep, steep-walled, V-shaped valley cut by a river through hard rock
